

ROUTING AND TRANSMITTAL SLIP

Date 15 AUG 77

TO: (Name, office symbol, room number, building, Agency/Post)	Initials	Date
1. FRANK EASTER- SC-5		
2. 1619 S. SECOND		
3. MT VERNON, WA 98284		
4.		
5.		

Action	File	Note and Return
Approval	For Clearance	Per Conversation
As Requested	For Correction	Prepare Reply
Circulate	For Your Information	See Me
Comment	Investigate	Signature
Coordination	Justify	

REMARKS

The maps you requested last week are attached. The undated plan is the most recent alignment considered (1966).

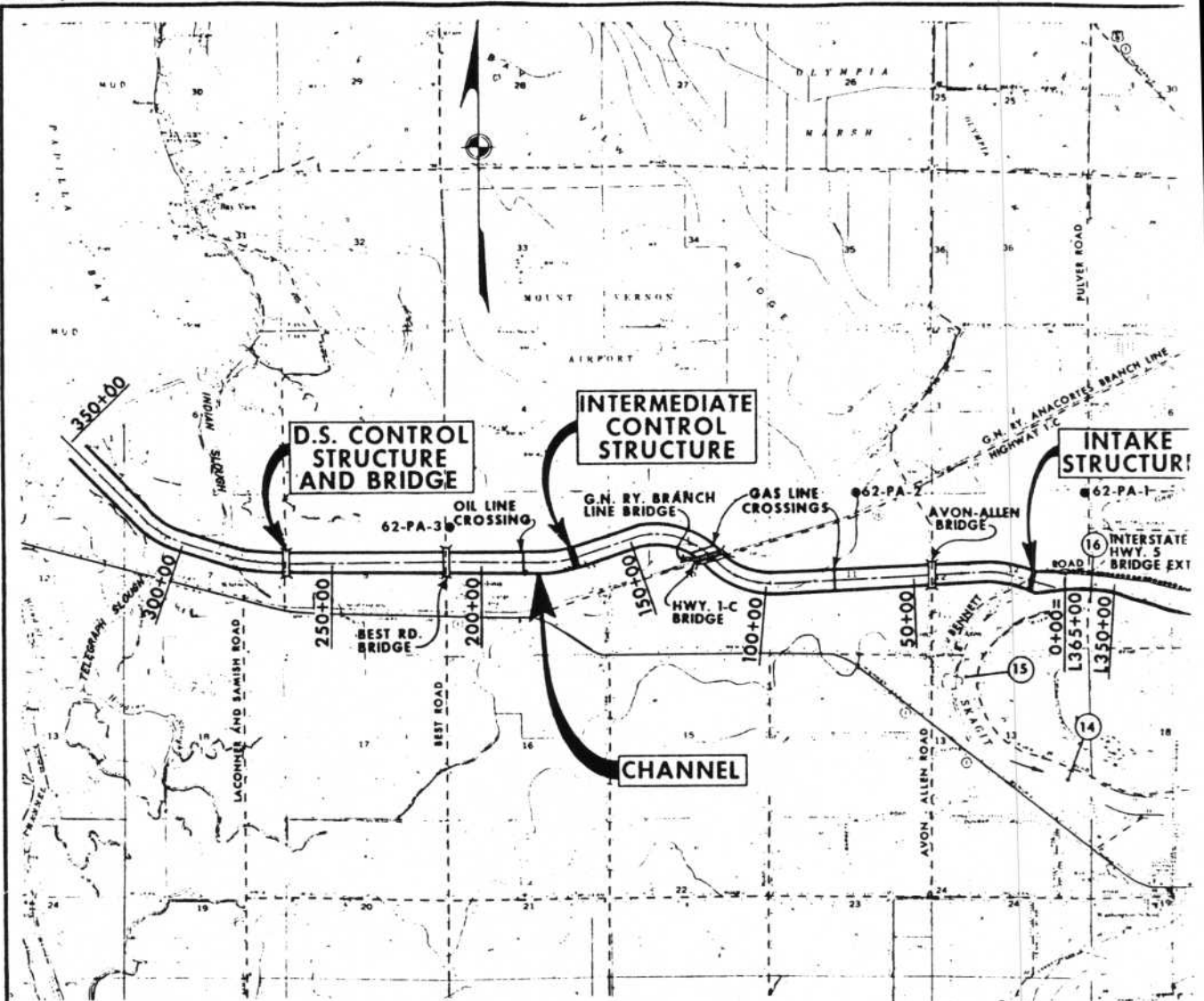
DO NOT use this form as a RECORD of approvals, concurrences, disposals, clearances, and similar actions

FROM: (Name, org. symbol, Agency/Post)	Room No.—Bldg.
FOREST BROOKS	
SHAGIT STUDY MANAGER	Phone No. 76A-3621

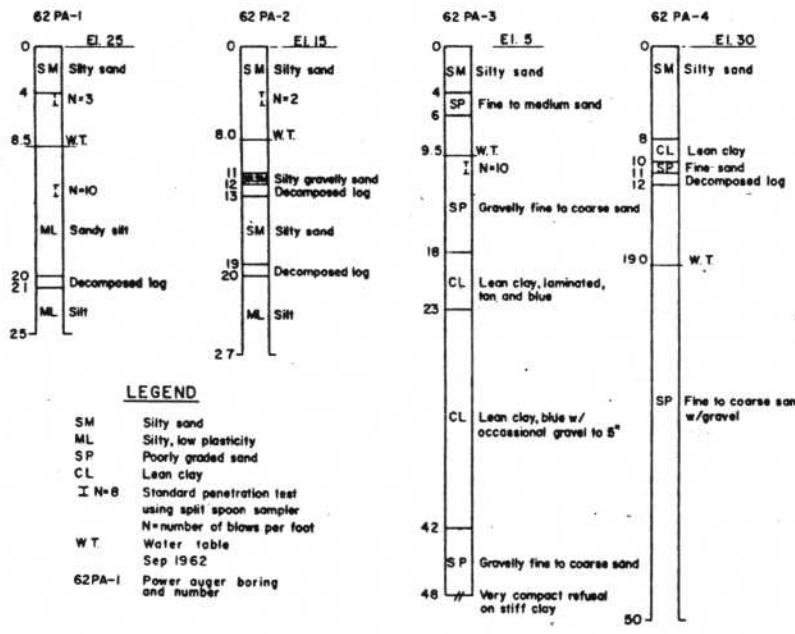
5041-102

OPTIONAL FORM 41 (Rev. 7-76)
Prescribed by GSA
FPMR (41 CFR) 101-11.206

GPO : 1976 O - 241-530 (3103)

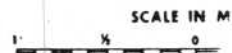


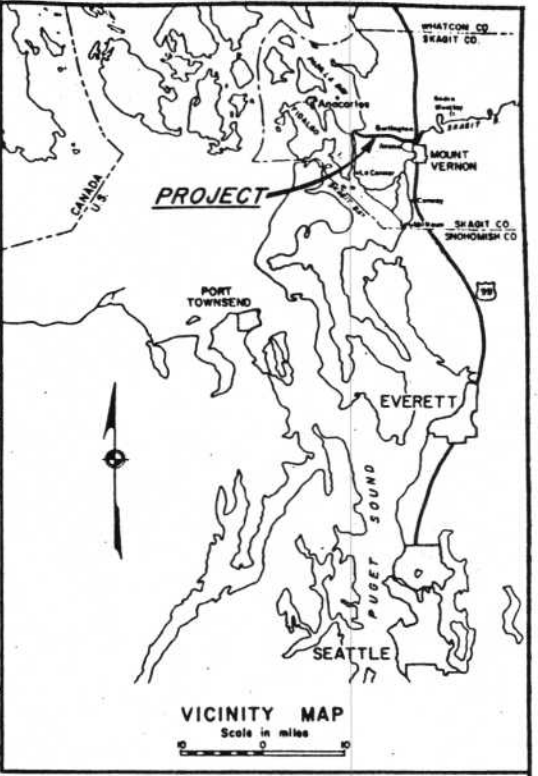
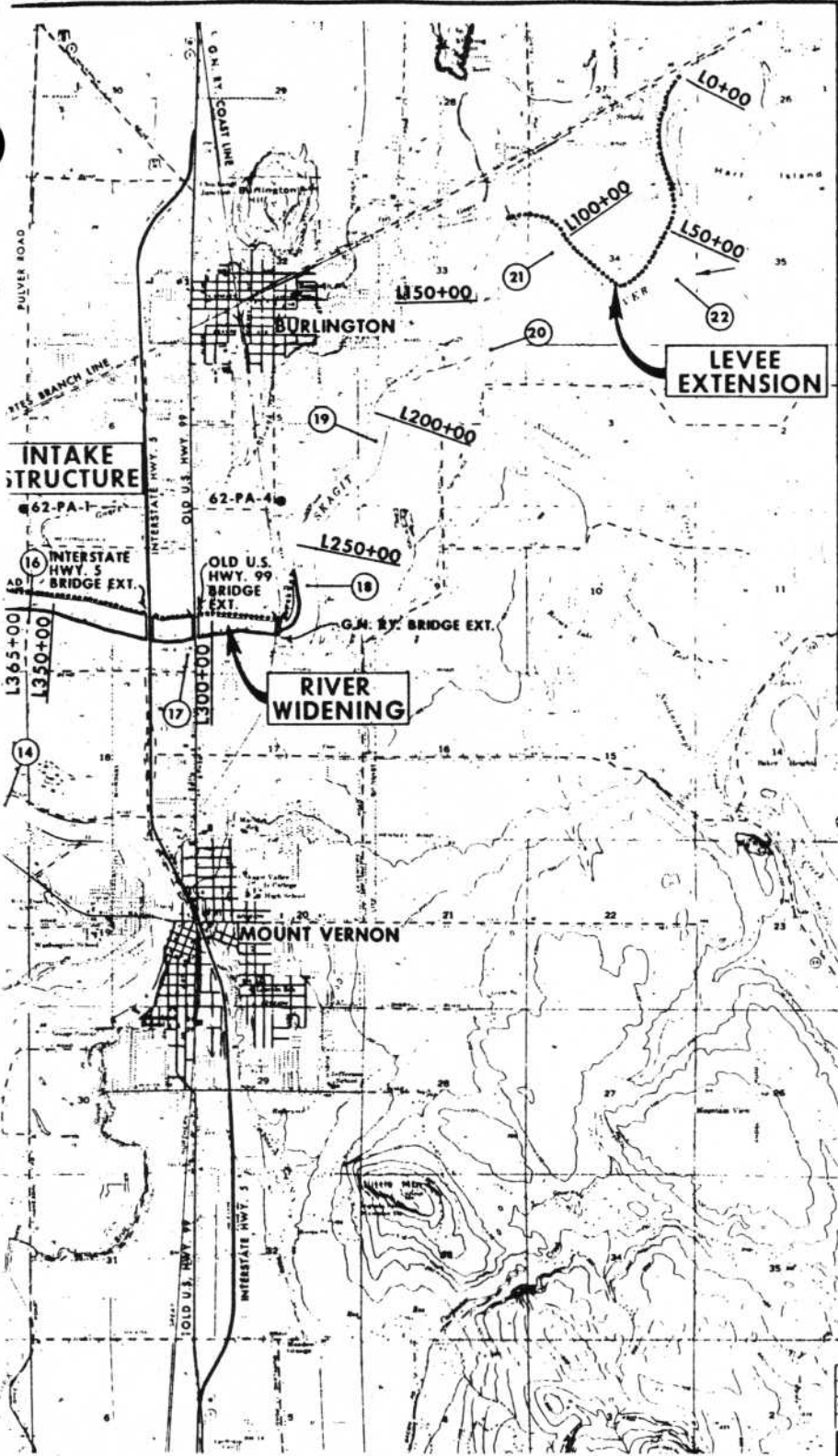
EXPLORATION LOGS



LEGEND

- SM Silty sand
- ML Silty, low plasticity
- SP Poorly graded sand
- CL Lean clay
- I N=8 Standard penetration test using split spoon sampler
- N=number of blows per foot
- W.T. Water table
- Sep 1962
- 62PA-1 Power auger boring and number



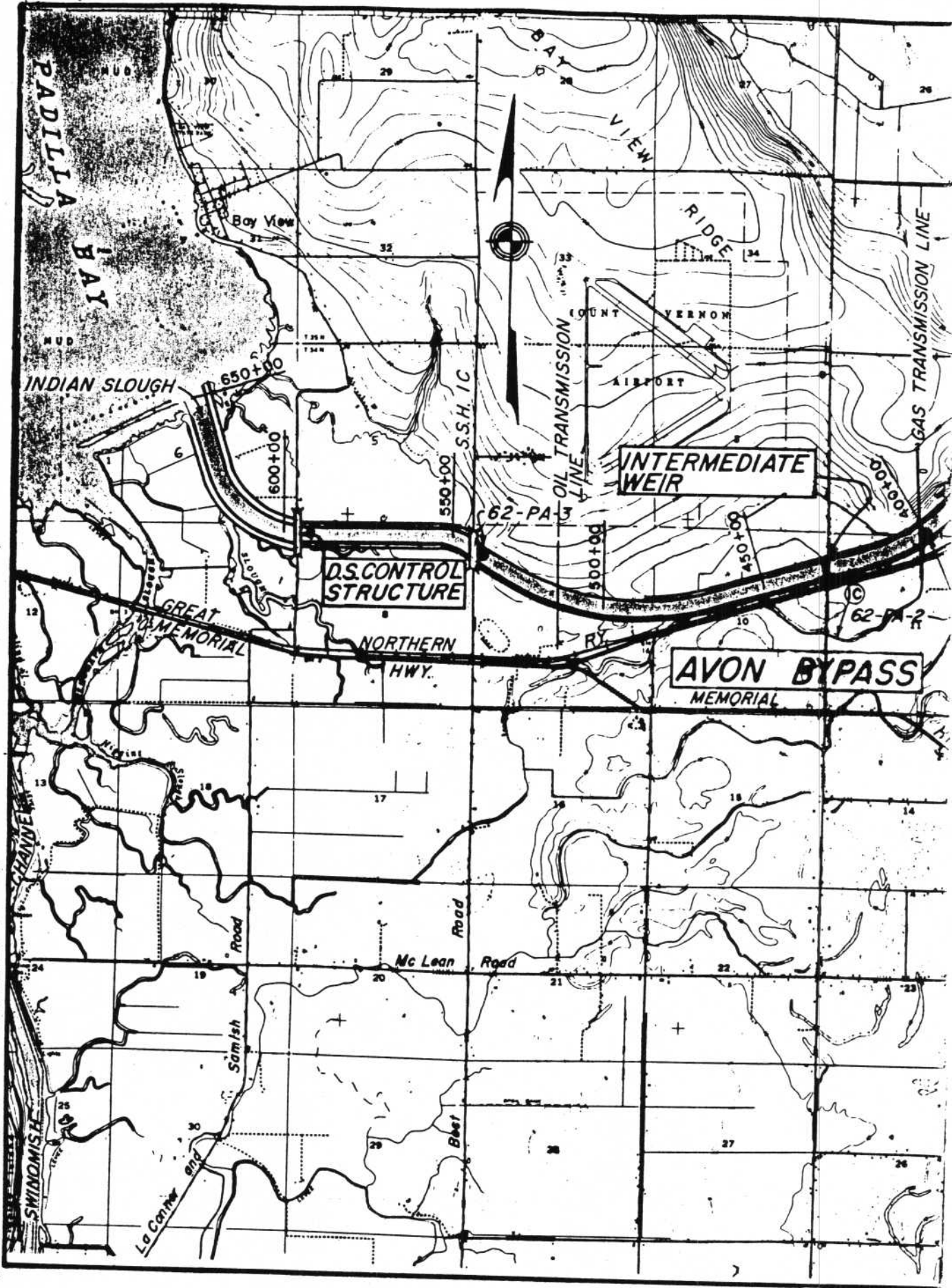


LEGEND

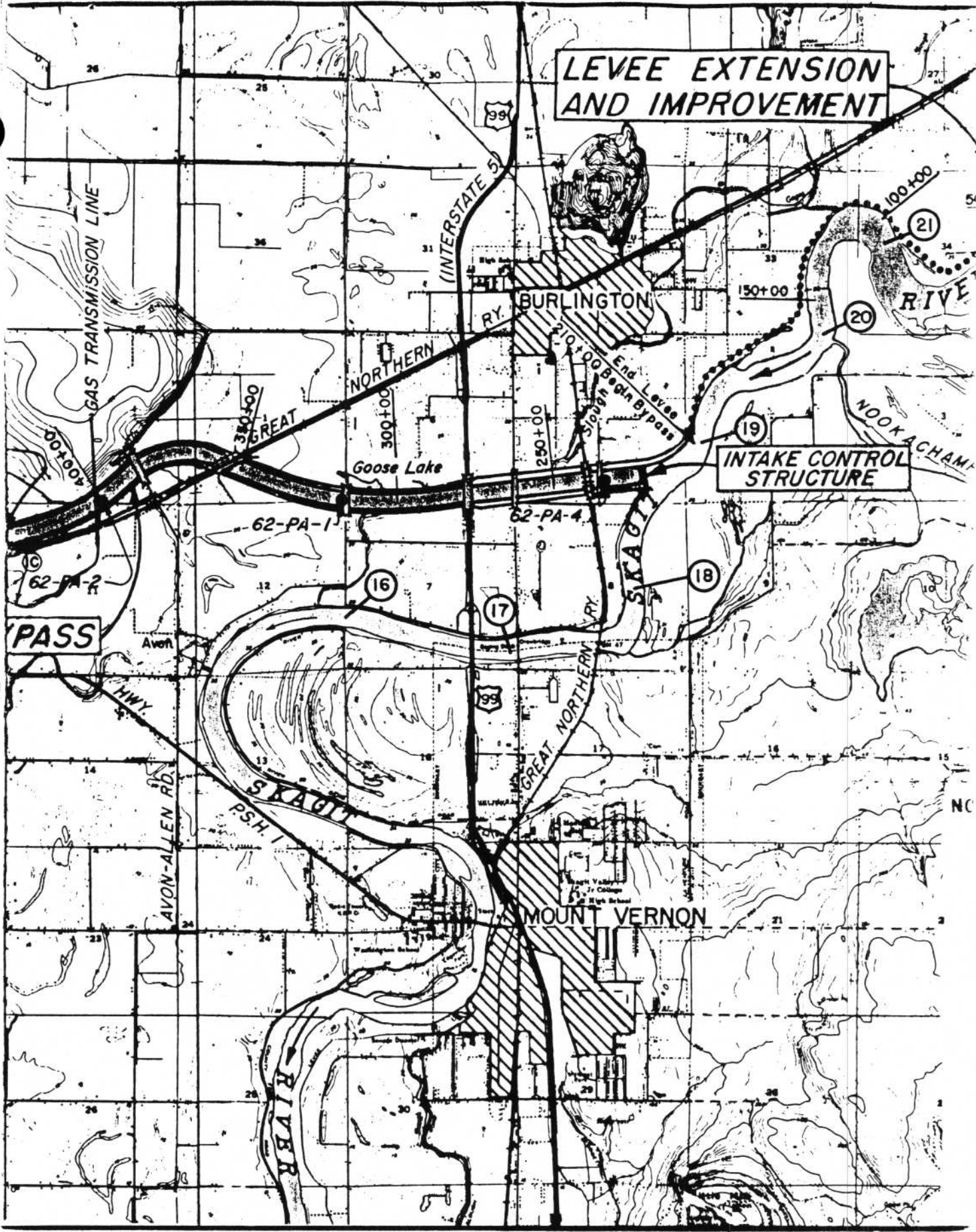
- BYPASS R/W
- BRIDGE CROSSING
- LEVEE
- TEST HOLE & NUMBER
- RIVER MILE

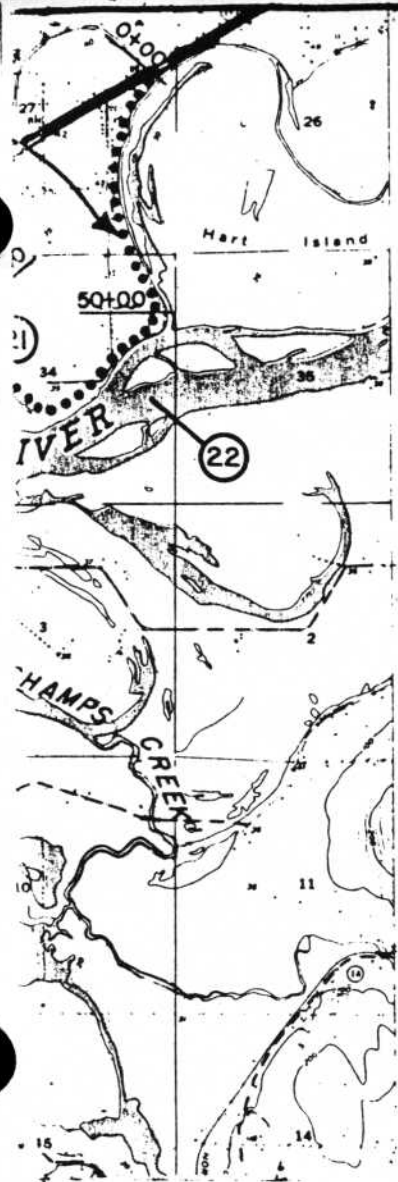


SYMBOL	DESCRIPTION	DATE	APPROVAL
REVISIONS			
U. S. ARMY ENGINEER DISTRICT, SEATTLE CORPS OF ENGINEERS, SEATTLE, WASHINGTON			
SKAGIT RIVER, WASHINGTON			
AVON BYPASS			
PROPOSED PLAN			
DESIGNED BY: <i>Keller-Dobson</i>	APPROVED FOR THE DISTRICT ENGINEER: <i>Sydney D. ...</i>		
WILLIAMS:	DATE:		
CHECKED BY:	SCALE: AS SHOWN		
S.E.:	DRAWING NUMBER: E-6-6-268		
PREPARED BY: <i>...</i>	SHEET 2 OF 7		
PROJECT ENGINEER:	CHIEF ENGINEERING SECTION		
REVIEWED:	CHIEF ENGINEERING SECTION		
CHIEF SPEC. REVIEWER:	CHIEF ENGINEERING SECTION		
ENGINEER:	CHIEF ENGINEERING SECTION		



LEVEE EXTENSION AND IMPROVEMENT





NOTE:
BORING LOGS ARE SHOWN
ON PLATE 7

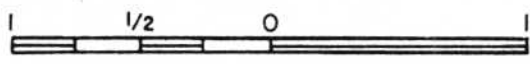


VICINITY MAP

LEGEND

- BRIDGE CROSSINGS HWY. RR.
- WATER AREA
- LEVEE
- BORING NUMBER 62-PA-1

SCALE IN MILES



SKAGIT RIVER, WASHINGTON
AVON BYPASS
GENERAL PLAN

In 1 sheet Sheet No. 1 Scale: As shown
 U.S. Army Engineer District, Seattle, Wash. **Sept. 1963**
 Prepared: *R.A. Skrinde* Submitted: *R. H. Sedney*
 Chief, Puget Sound Basin Sect. Chief, Basin Planning Branch
 Recommended: *A. Stubbart* Approved: *Ernest J. Pease*
 Chief, Engineering Division Colonel, Corps of Engineers
 Dr: BECHLY Transmitted with report File No.
 Tr: WEW, R.E.P. dated E-6-6-171
 Ck: SKRINDE