

**Essential Facilities in the City of Mount
Vernon Affected by a 100 Year Flood Due
to the Removal of the Mount Vernon
Levee**

Figure 1. Essential Facilities in the City of Mount Vernon. Essential facilities include fire stations, hospitals, and other vital business. Notice the depth of flooding near some of these facilities, which may be as high as 15 feet or more. *Depth is shown in a different format than previous maps.

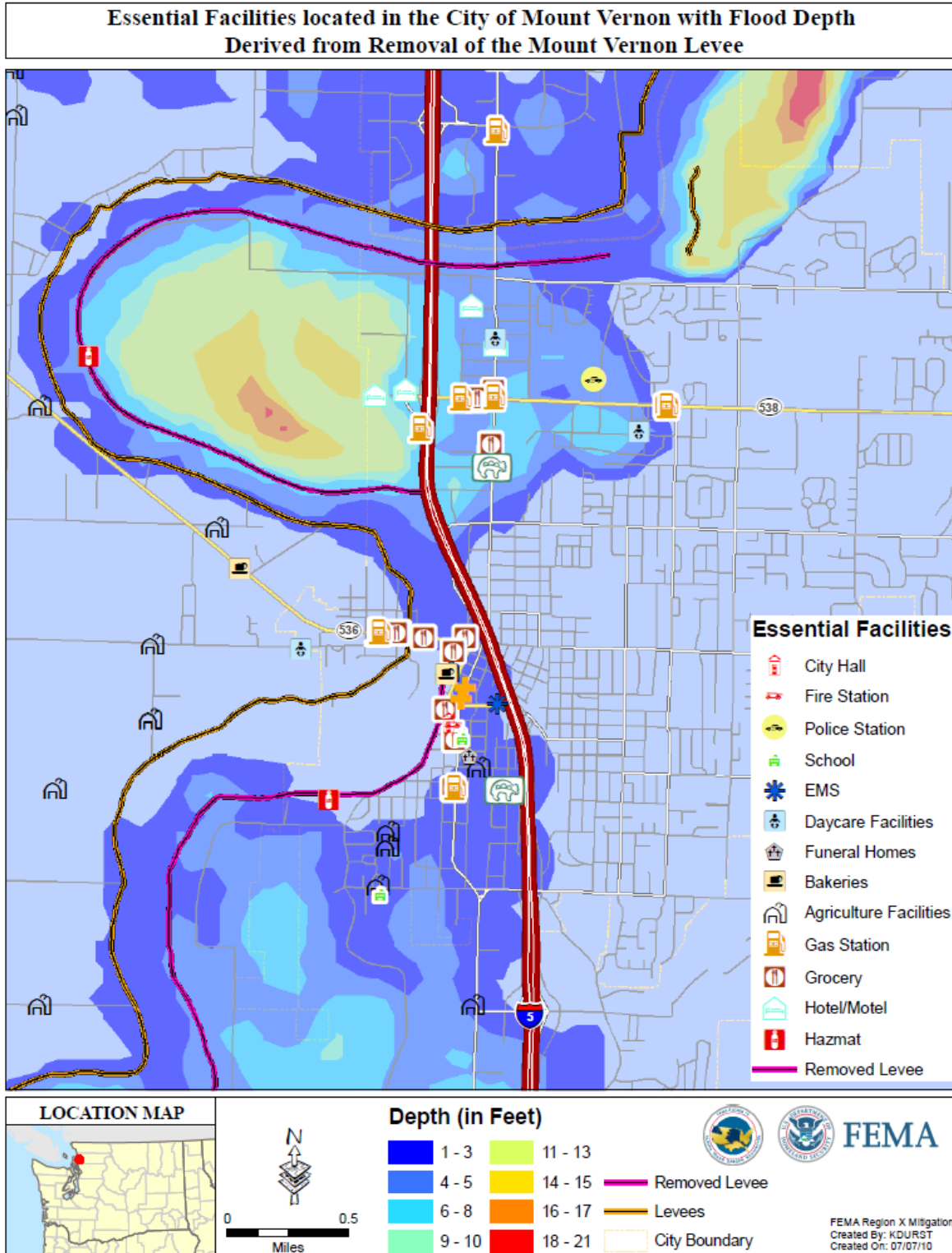


Table 1. Essential facilities and flood depths for City of Mount Vernon

Facility Type	Potential Depth	Facility Type	Potential Depth
Public		Schools	
Public Health	1-3 feet	High	1-3 feet
Child Care	3-6 feet	Manufacturing	
Child Care	7-15 feet	Malt Beverages	1-3 feet
Funeral Home	1-3 feet	Bakeries	15+ feet
Fire	1-3 feet	Meat Packing	1-3 feet
Police	7-15 feet		
City Hall	1-3 feet		
Chemical		Agriculture	
Gas Stations	7-15 feet	Poultry	7-15 feet
Gas Stations	3-6 feet	Field Crops	3-6 feet
Gas Stations	7-15 feet	Field Crops	3-6 feet
Gas Stations	7-15 feet	Field Crops	1-3 feet
Gas Stations	1-3 feet	Livestock	3-6 feet
Repair	1-3 feet	Nursery	1-3 feet
Towing	1-3 feet	Produce	15+ feet