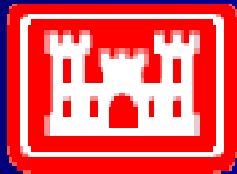
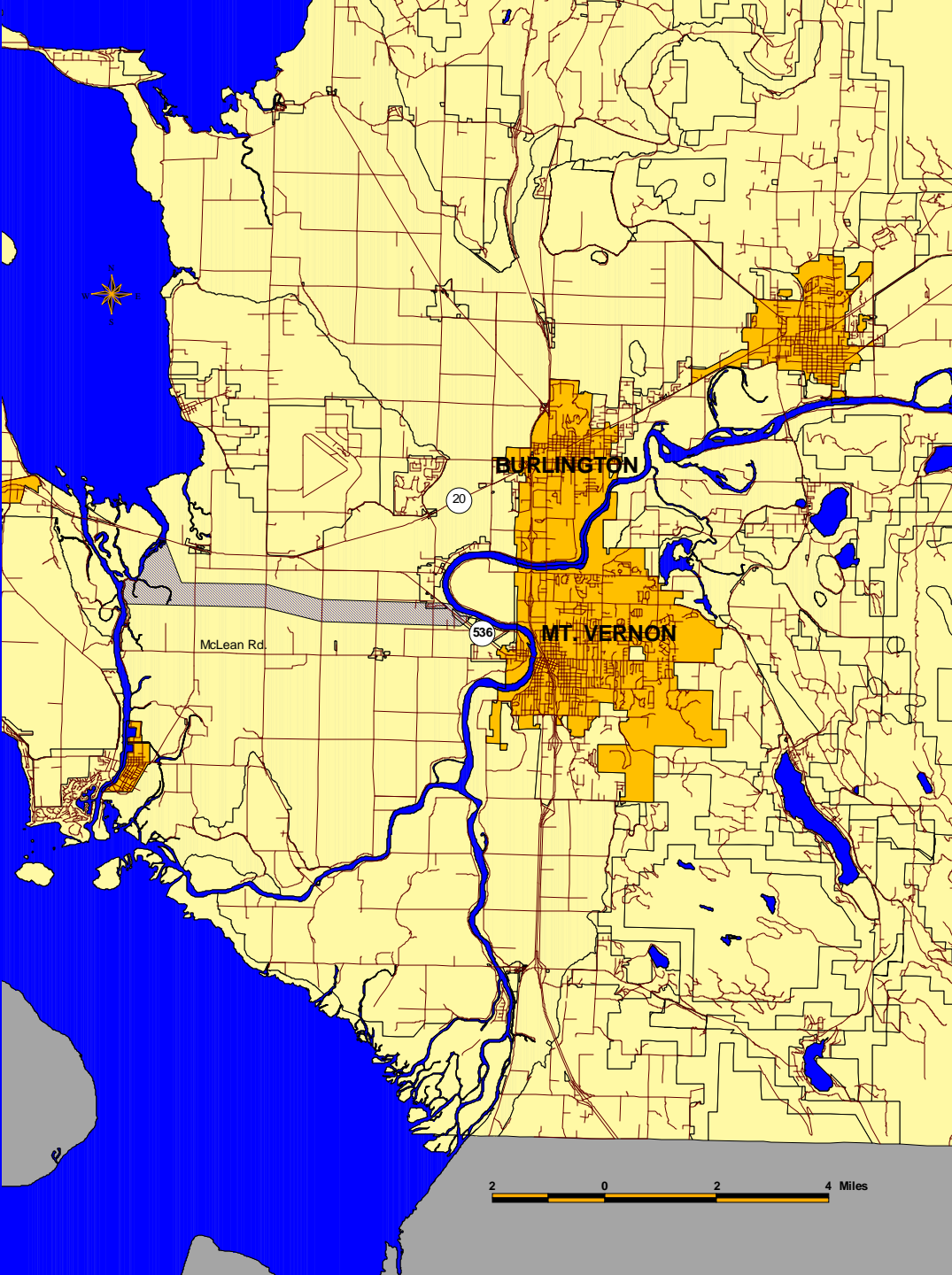


# Modeling Results

For December 12<sup>th</sup> meeting alternatives

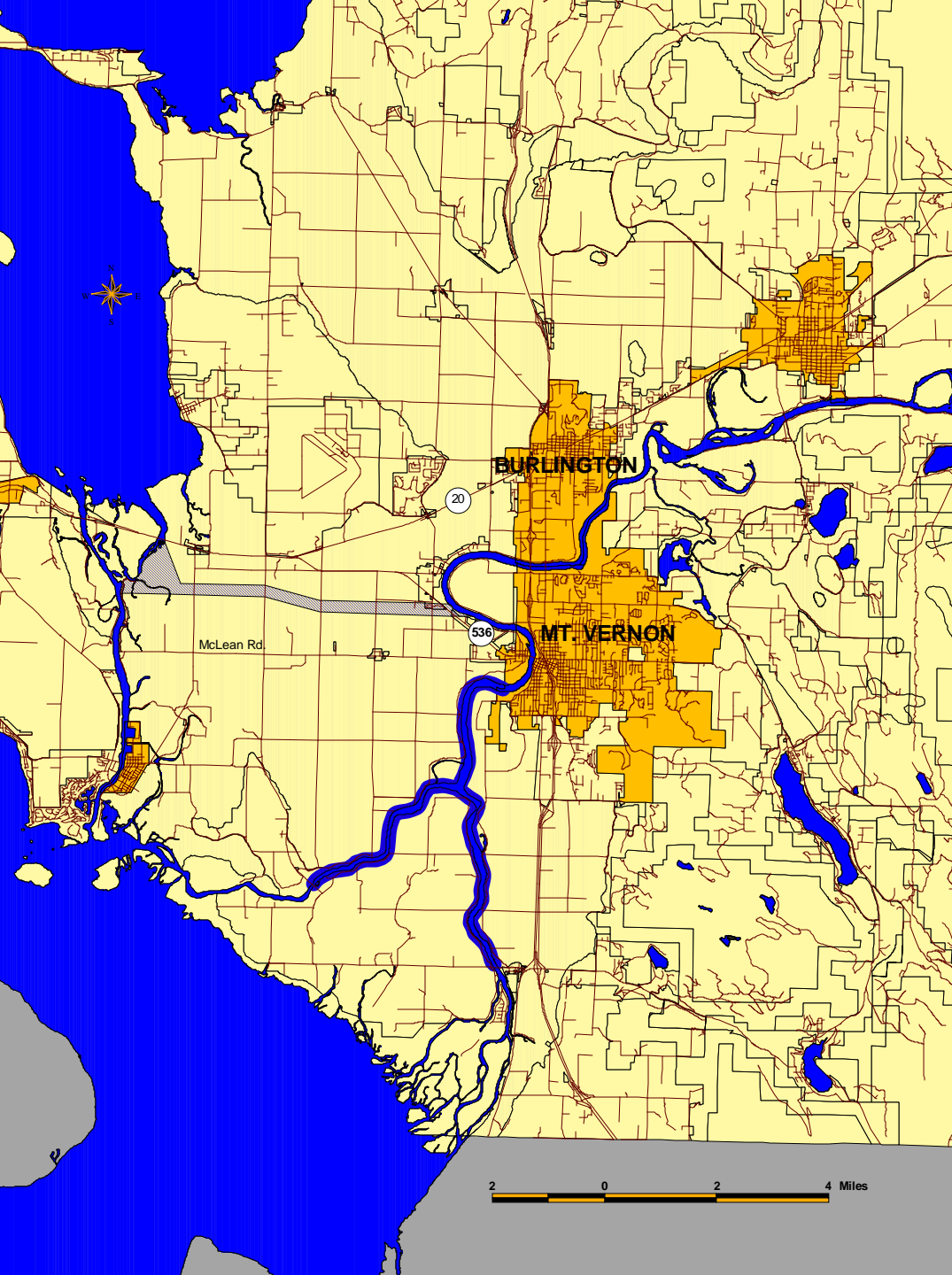


US Army Corps of Engineers  
Seattle District



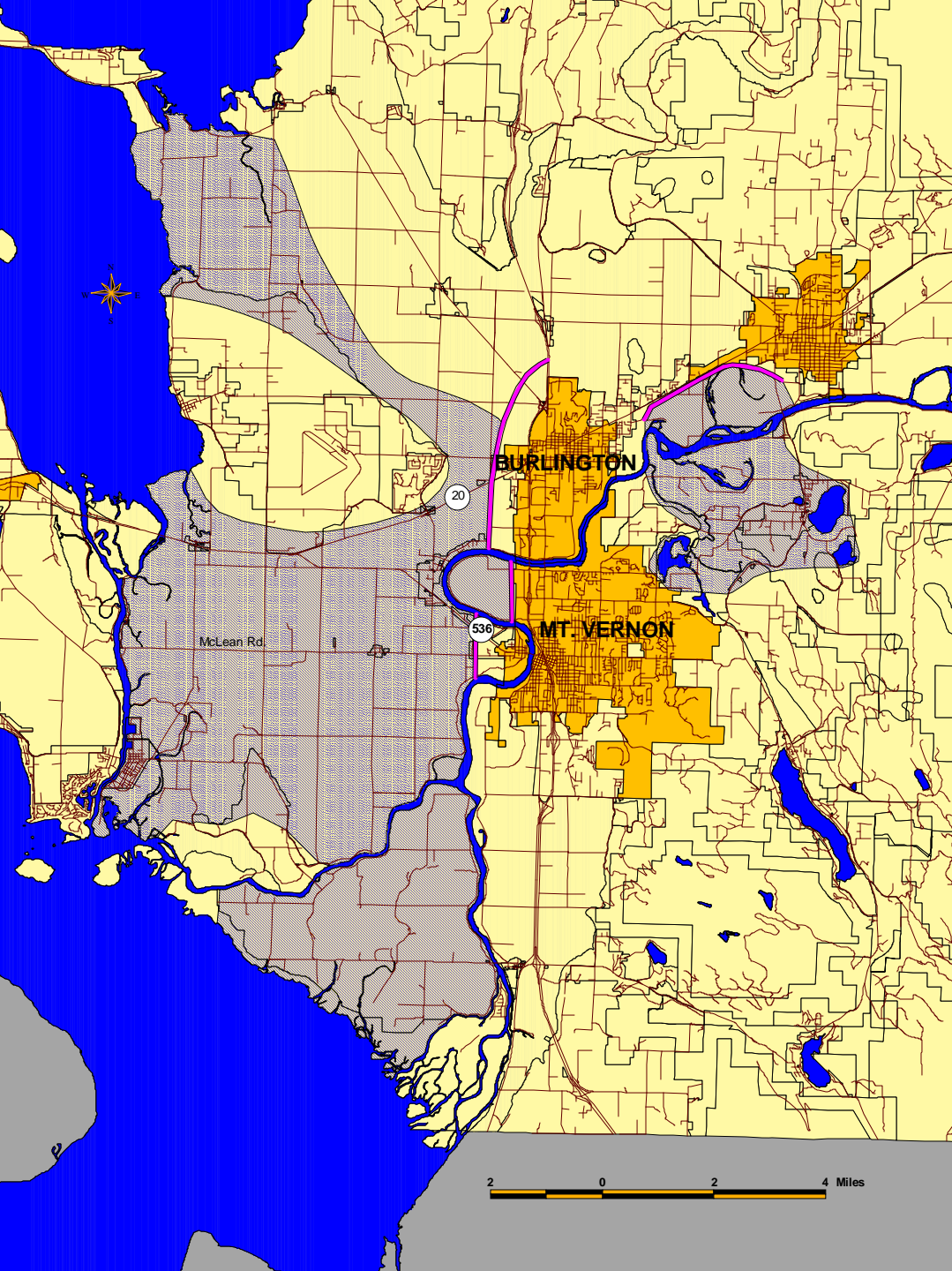
# Alternative 1

US Army Corps of  
Engineers Seattle District



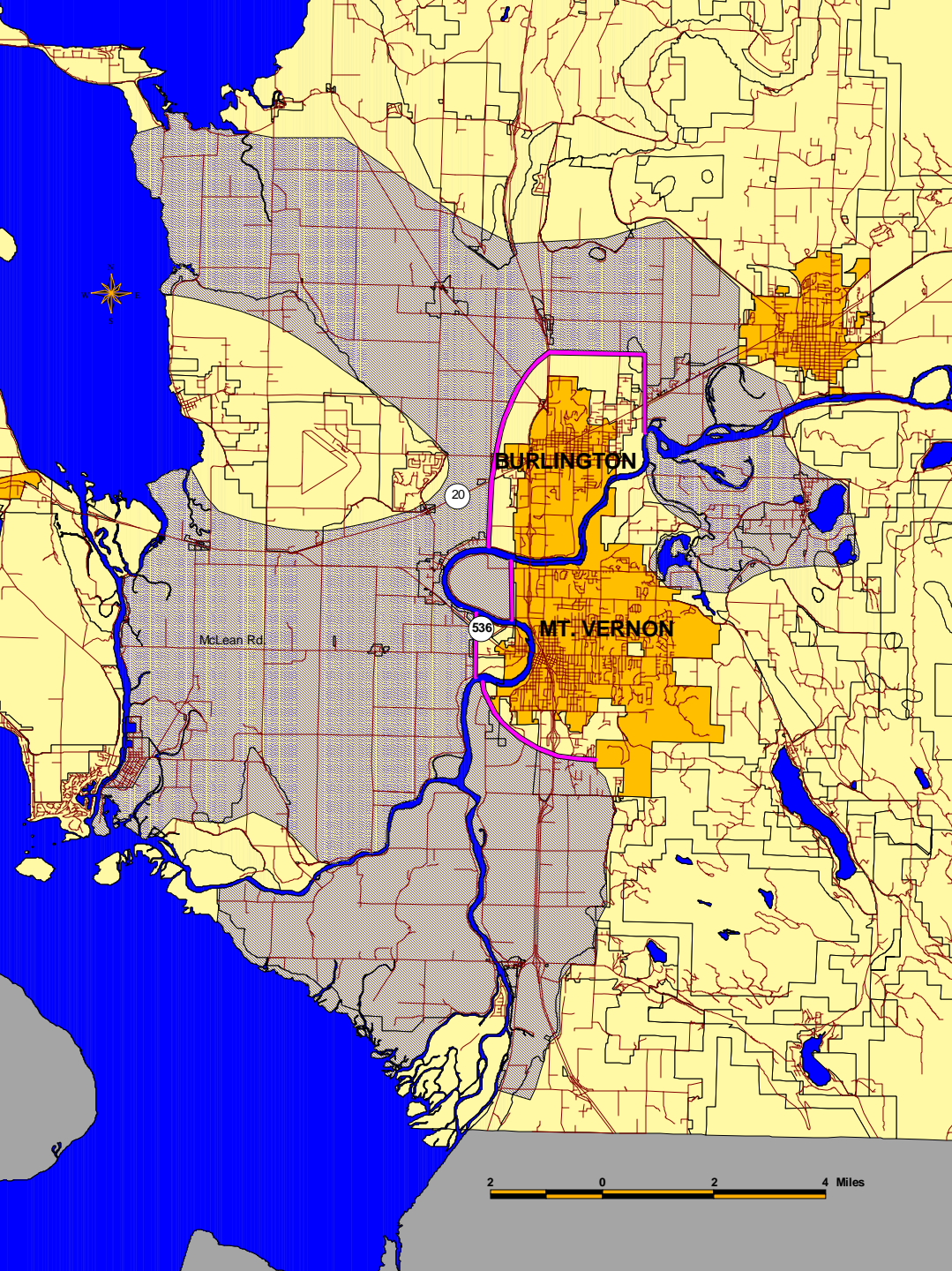
## Alternative 2

US Army Corps of  
Engineers Seattle District



## Alternative 3

US Army Corps of  
Engineers Seattle District



## Alternative 4

US Army Corps of  
Engineers Seattle District